

# Fuse Strips for Battery-powered Vehicles Rated 80V

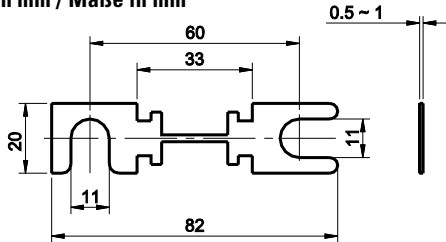
RoHS



Non-housed fuse strips for battery powered vehicles. Current rating 35 A - 500 A, 80 VDC. 90°. Straight fork type lugs.

Sicherungsstreifen ohne Gehäuse für batteriebetriebene Fahrzeuge. Nennstrom 35 A bis 500 A, 80 VDC. Mit Anschlüssen in Gabelform (90° und gerade).

**Dimensions in mm / Maße in mm**

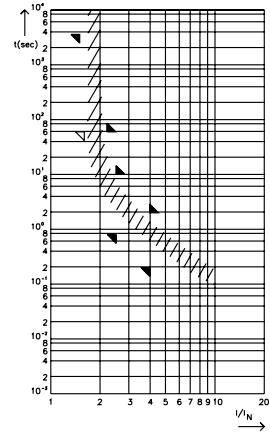


**Specifications**

DIN 43560/1  
**Metal parts:** 35 A - 80 A: Zinc-alloy  
 100A - 425 A: Copper Cu, gal. Sn  
**Packaging unit:** 50 pieces

**Pre-arcing Time - limits / Schmelzeit-Grenzwerte DIN**

FI = 1.00 (max. operating current: 1.0 x I<sub>rat</sub> at 23°C)



**Time-Current Characteristics / Schmelzeit-Grenzwerte**

% of Rating % des Nennstromes	Opening Time Min / Max (s) Schmelzcharakteristik Min / Max (s)
150	1 h / - - / 60 s
220	- / 60 s - / 60 s
250	- / 60 s 800 ms / 10 s - / 10 s
400	250 ms / 2 s 250 ms / 2 s

Part Number Artikel-Nr.		Current Rating Nennstrom	Typ. Voltage Drop Typ. Spannungsfall	Cold Resistance Kaltwiderstand	I²t
a = 11 mm	a = 9 mm*				
157.5700.5351	157.5916.5351*	35 A	125 mV	on request	on request
157.5700.5401*	-	40 A	125 mV	on request	on request
157.5700.5501	157.5916.5501*	50 A	125 mV	on request	on request
157.5700.5631	157.5916.5631*	63 A	125 mV	on request	on request
157.5700.5801	157.5916.5801*	80 A	125 mV	on request	on request
157.5700.6101	157.5916.6101*	100 A	125 mV	on request	on request
157.5700.6121	157.5916.6121*	125 A	125 mV	on request	on request
157.5700.6131*	157.5916.6131*	130 A	125 mV	on request	on request
157.5700.6141*	157.5916.6141*	135 A	125 mV	on request	on request
157.5700.6151*	157.5916.6151*	150 A	125 mV	on request	on request
157.5700.6161	157.5916.6161*	160 A	125 mV	on request	on request
157.5700.6171*	157.5916.6171*	175 A	125 mV	on request	on request
157.5700.6201	157.5916.6201*	200 A	125 mV	on request	on request
157.5700.6231*	-	225 A	125 mV	on request	on request
157.5700.6251	157.5916.6251*	250 A	125 mV	on request	on request
157.5700.6271*	-	275 A	125 mV	on request	on request
157.5700.6301	-	300 A	125 mV	on request	on request
157.5700.6331*	-	325 A	125 mV	on request	on request
157.5700.6351	-	355 A	125 mV	on request	on request
157.5700.6401*	-	400 A	125 mV	on request	on request
157.5700.6421	-	425 A	125 mV	on request	on request
157.5700.6501*	-	500 A	125 mV	on request	on request

\* Not mentioned in the standards.

Corresponding holder see Section "Fuse Holders."